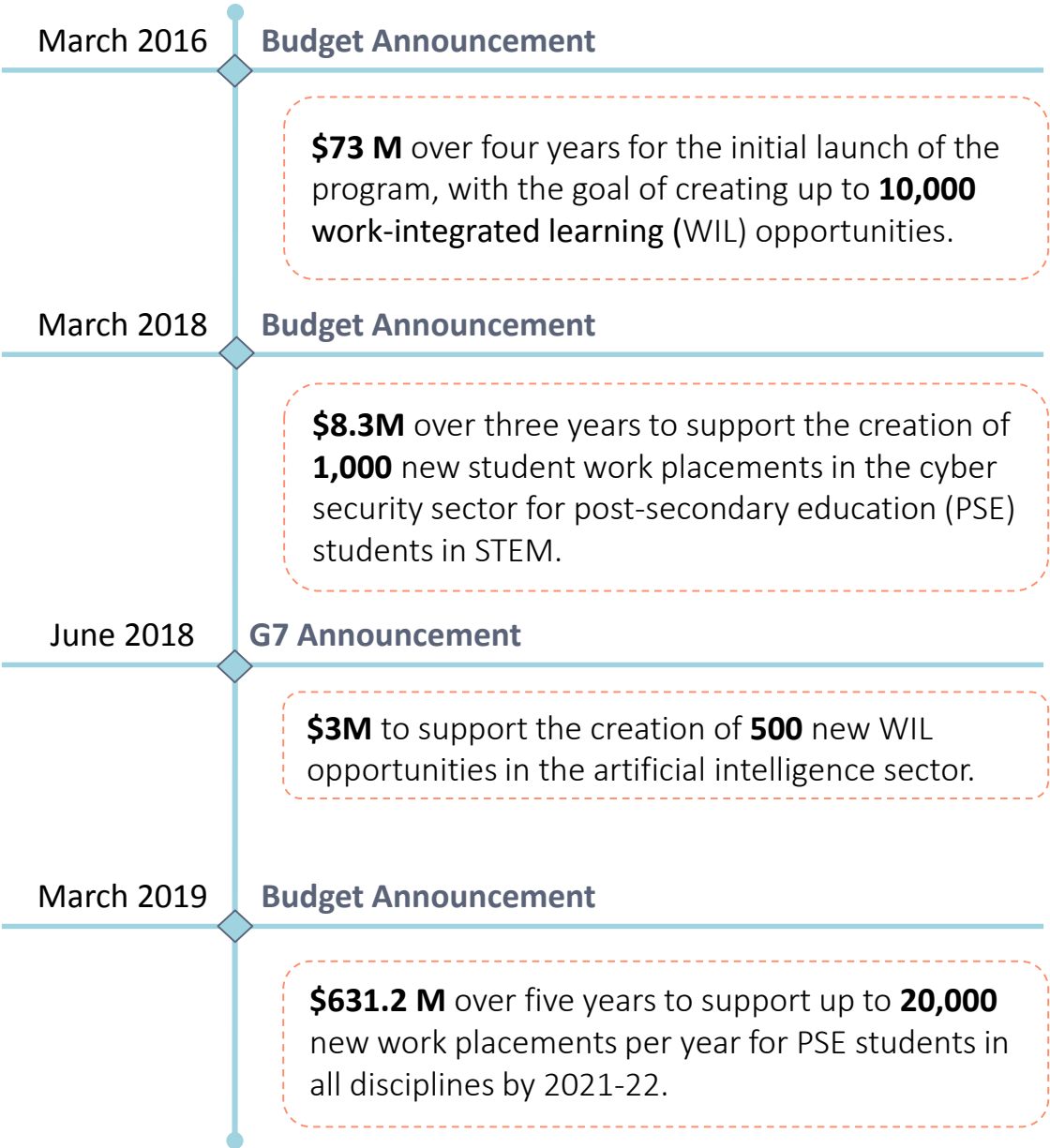


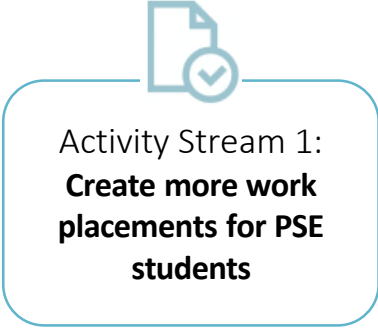
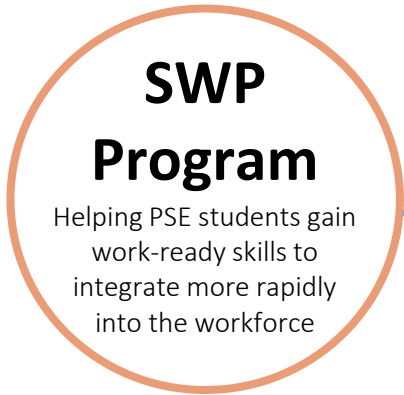


# Student Work Placement (SWP) Program

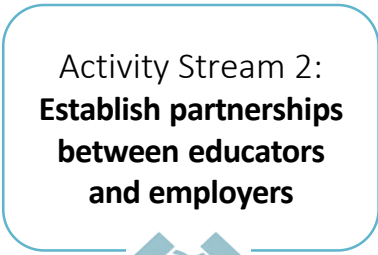
Connecting Students and  
Employers

# SWP Program History





- Recruit employers to offer quality WIL opportunities for PSE students.
- Provide employers with **wage subsidies** of up to **\$5,000** per placement, and up to **\$7,000** per placement for **under-represented** students: women in STEM, newcomers, Indigenous Peoples, and persons with disabilities; and first year students.



- Support sustainable partnerships between industry and PSE institutions to align skills development to labour market demand.
- Outreach and support to facilitate participation of small-to-medium enterprises (SMEs).

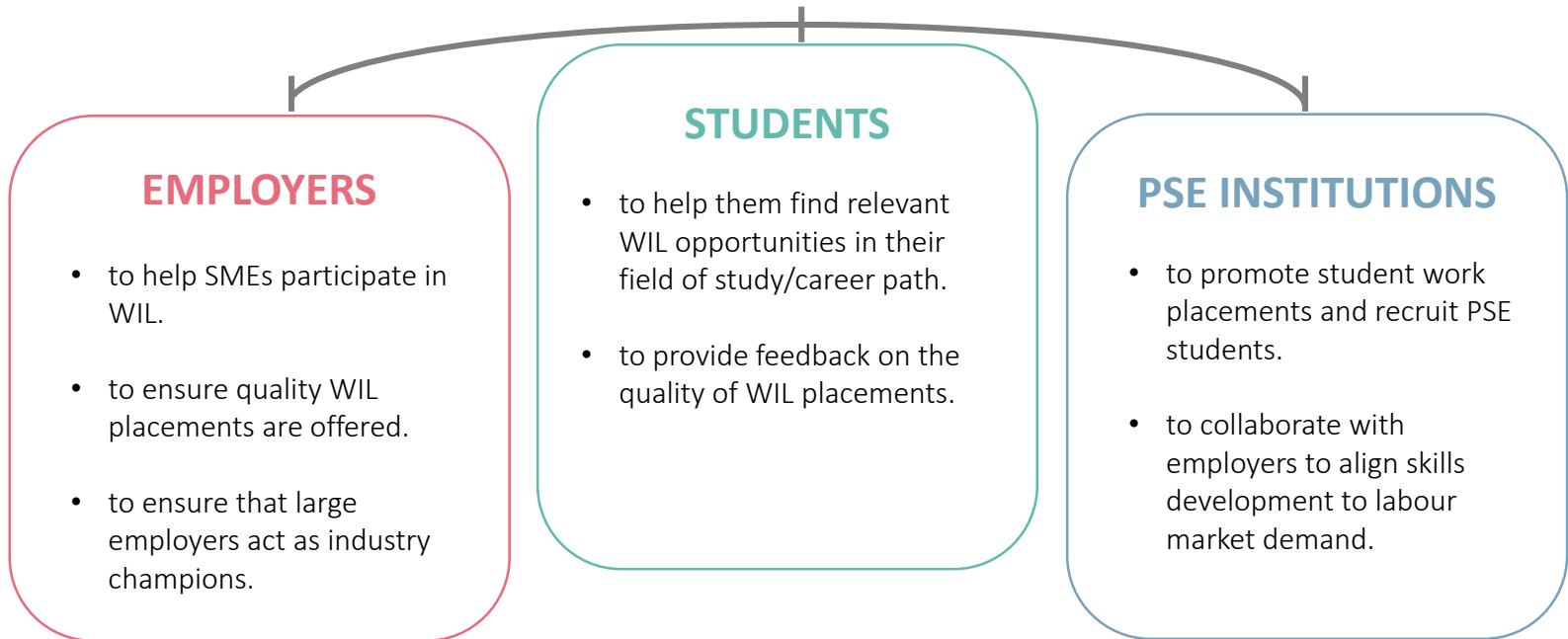


# Delivery Approach



## Employer Consortia

Employer consortia are third-party organizations representing the skills development and human resource interests of a sector, who engage with employers, students and PSE institutions to deliver the SWP program.



# SWP Program Eligibility Criteria



## EMPLOYERS

- Employers of all sizes and from all sectors.
- Participants can be for profit companies and not-for-profit organizations.
- Federal, Provincial, Territorial and Municipal Governments are not eligible.



## STUDENTS

Individuals who are:

- Registered as a student in a recognized PSE institution in any program or field of study; and
- Canadian citizens, permanent residents, or persons with refugee protection given under the law; and
- Legally able to work in Canada according to the laws and regulations of the province or territory where they live.



## PSE INSTITUTIONS

All publically recognized PSE institutions:

- Polytechnics
- Universities
- Colleges
- CEGEPS

SWP funded placements must be part of formal curriculum.

Summary of  
**SWP Program  
Results**

[2 years and 3 months]



**5,635**

placements across Canada



**47%** of students are  
under-represented or first year students



**167**

post-secondary institutions participating



**2,076**

employers offering new placements



**88%** of employers are  
small-and-medium sized enterprises



**8**

high growth sectors employing students



# Expanding the SWP program to all disciplines

The expanded SWP Program is available as of September 2019, delivering WIL opportunities to PSE students in all disciplines through the following delivery partners:



## Information and Communications Technology

- Information and Communications Technology Council (ICTC)
- Information Technology Association of Canada (ITAC)



## Aviation / Aerospace

- Canadian Council for Aviation and Aerospace (CCAA)



## Environment

- Environmental Careers Organization of Canada (ECO Canada)

## Electricity/Clean Energy

- Electricity Human Resource Council (EHRC)



## Biotechnology

- BioTalent Canada



## Entrepreneurship

- Venture for Canada



## All Sectors

- Campus Connect Outcomes



The Program is exploring engagement with additional partners in early 2020.



# Campus Connect

Free access for all users: Students, Employers, and PSE institutions (free API)

